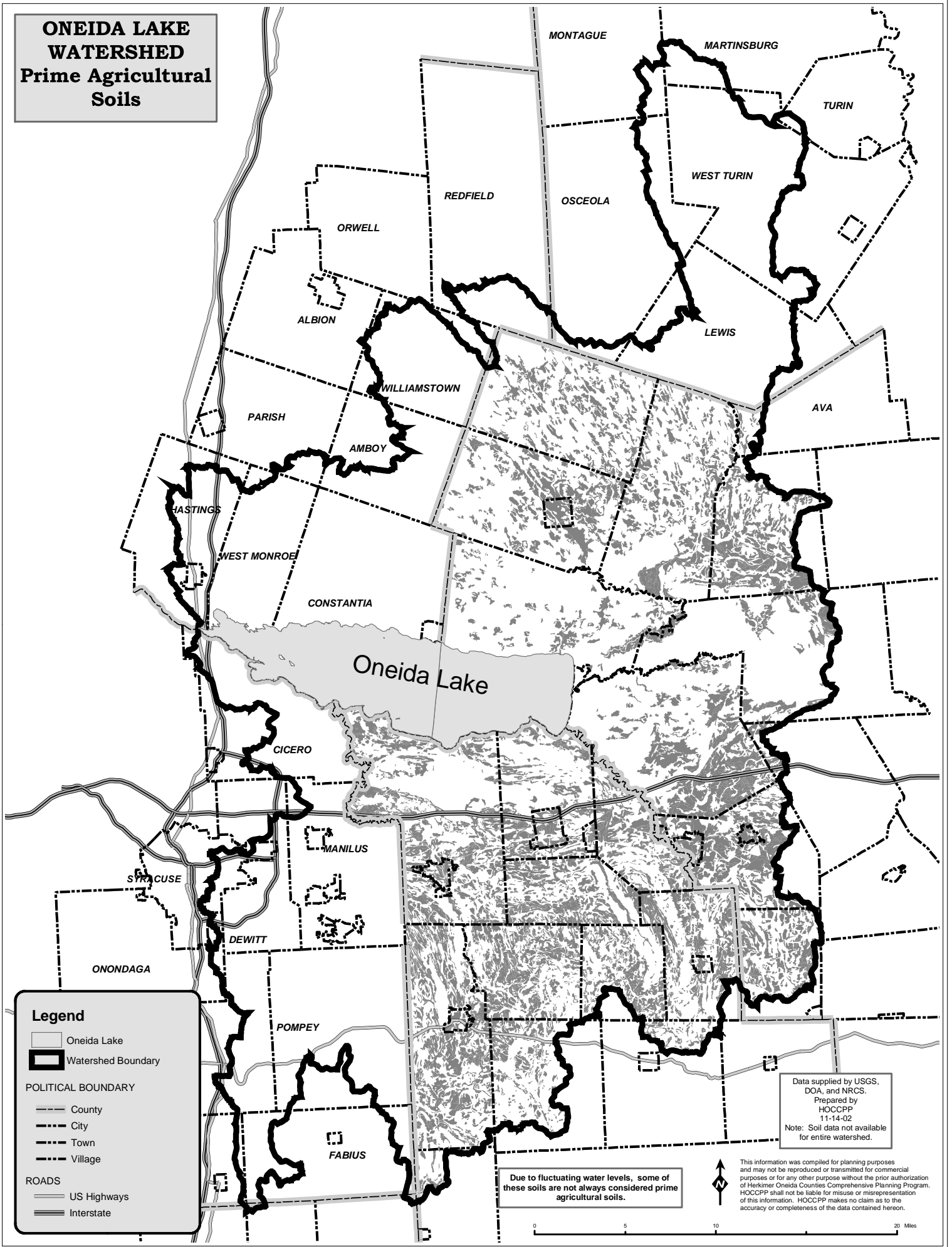


**ONEIDA LAKE
WATERSHED
Prime Agricultural
Soils**



Due to fluctuating water levels, some of these soils are not always considered prime agricultural soils.

Data supplied by USGS, DOA, and NRCS. Prepared by HOCCPP 11-14-02
Note: Soil data not available for entire watershed.

This information was compiled for planning purposes and may not be reproduced or transmitted for commercial purposes or for any other purpose without the prior authorization of Herkimer Oneida Counties Comprehensive Planning Program. HOCCPP shall not be liable for misuse or misrepresentation of this information. HOCCPP makes no claim as to the accuracy or completeness of the data contained hereon.

