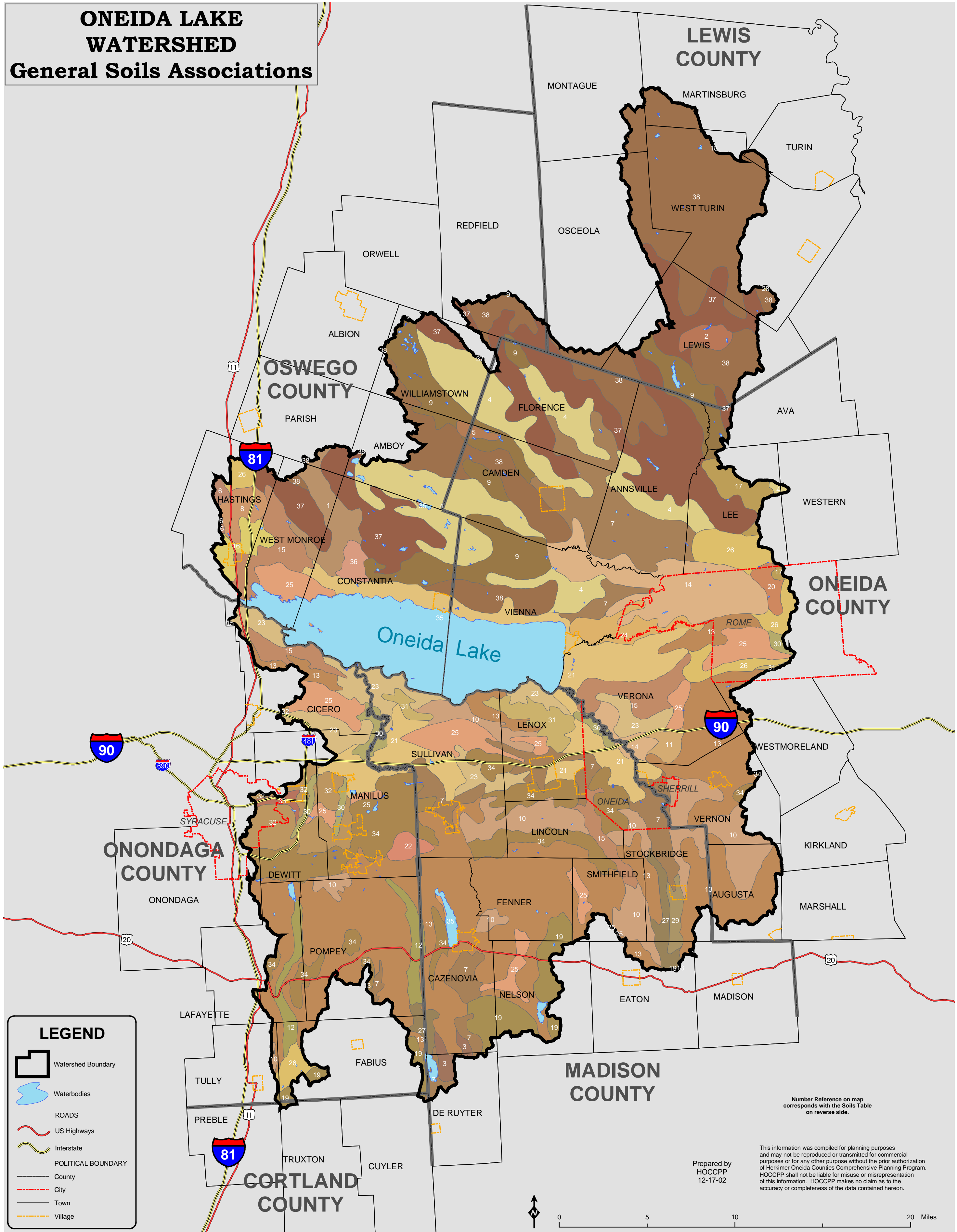


ONEIDA LAKE WATERSHED

General Soils Associations



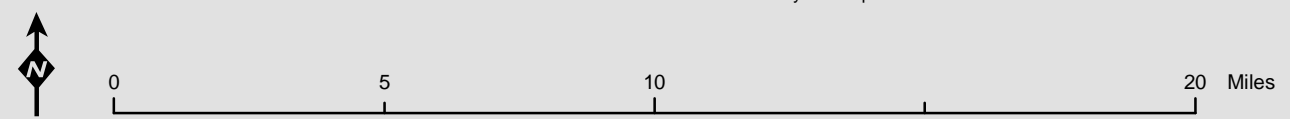
LEGEND

- Watershed Boundary
- Waterbodies
- ROADS
- US Highways
- Interstate
- POLITICAL BOUNDARY
- County
- City
- Town
- Village

Number Reference on map corresponds with the Soils Table on reverse side.

Prepared by
HOCCPP
12-17-02

This information was compiled for planning purposes and may not be reproduced or transmitted for commercial purposes or for any other purpose without the prior authorization of Herkimer Oneida Counties Comprehensive Planning Program. HOCCPP shall not be liable for misuse or misrepresentation of this information. HOCCPP makes no claim as to the accuracy or completeness of the data contained hereon.



Oneida Lake Watershed Soils

<i>Map ID</i>	<i>Map Unit</i>
1	ADAMS-COLTON-DUXBURY
2	ADAMS-DAWSON-LOXLEY
3	BATH-MARDIN-LORDSTOWN
4	BERKSHIRE-BICE-TUNBRIDGE
5	CARBONDALE-DORA-SAPRISTS
6	CARLISLE-PALMS-SCRIBA
7	CHENANGO-HOWARD-PALMYRA
8	COLONIE-ELNORA-OAKVILLE
9	COLOSSE-ADAMS-BICE
10	DARIEN-CAZENOVIA-NUNDA
11	FARMINGTON-GALWAY-STOCKBRIDGE
12	HERKIMER-WAYLAND-TEEL
13	HONEOYE-ONTARIO-LIMA
14	HOOSIC-WINDSOR-LIMERICK
15	HUDSON-RHINEBECK-COLLAMER
16	IRA-SCRIBA-SODUS
17	KALURAH-PYRITIES-MALONE
18	LOXLEY-BESEMAN-PEACHAM
19	MARDIN-LORDSTOWN-VOLUSIA
20	MASSENA-SUN-AMENIA
21	MINOA-ARKPORT-LAMSON
22	MOHAWK-MANHEIM-AURORA
23	NIAGARA-CANANDAIGUA-COLLAMER
24	OCCUM-RIPPOWAM-POOTATUCK
25	PALMS-CARLISLE-EDWARDS
26	PALMYRA-ALTON-HOWARD
27	PALMYRA-HOWARD-ARKPORT
28	PINCKNEY-CAMRODEN-BICE
29	SCHOHARIE-ODESSA-CAZENOVIA
30	TEEL-WAYLAND-HAMLIN
31	UNKNOWN
32	URBAN LAND-HOWARD-NIAGARA
33	URBAN LAND-UDORTHENTS-UDIPSAMMENTS
34	WASSAIC-FARMINGTON-LAIRDSVILLE
35	WATER
36	WAUMBURG-SEARSPORT-BESEMAN
37	WORTH-EMPEYVILLE-BICE
38	WORTH-EMPEYVILLE-WESTBURY