

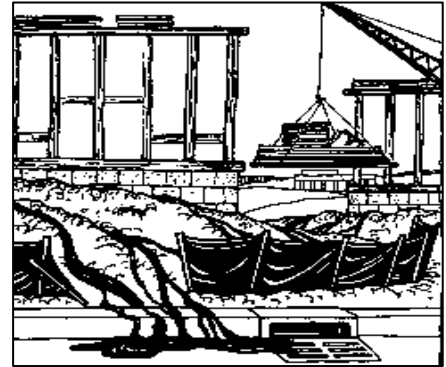
Stormwater Workshop for Municipal Highway and Department of Public Works Staff

Thursday, November 5, 2009

Salina Town Hall

Registration 8:30 AM

Program 9:00 –12:00



No fee is required to attend this program. This workshop will assist MS4s in meeting staff training requirements for Minimum Control Measures 3, 4, 5 and 6.

Please register by contacting Dave Kubek at (315) 422-8276 x211 or dkubek@cnyrpdb.org. Please indicate the number attending and provide a contact phone number or email address.

Registration deadline: October 28, 2009.

This session is part of the Year 2 CNYRPDB MS4 Stormwater Assistance Program. There is no limit in the number of staff that may attend per participating municipality. Space is limited, so registration is on a first-come, first-served basis.

Agenda will include the following:

9:00 to 9:10

Brief Introduction and Background on Stormwater Regulations

- SPDES Permits – Goals and Intent

9:10 to 9:25

Regulated MS4s and the MS4 Permit

- Pollutants of concern and minimum control measures
- Onondaga Lake Watershed: Special Requirements

9:25 to 10:25

Stormwater Construction Permit and Municipal Erosion and Sediment Control

- Basic administrative requirements
- Exemptions for highway construction

- SWPPP: Administrative requirements and required technical components
- Interaction between MS4 and Construction Permit Programs
- Violations of water quality standards
- Examples of common erosion and sediment control problems
- NYS Technical Standards and examples of good erosion and sediment control
- Owner/operator inspections (by the municipality)
- Frequently Asked Questions

10:25 to 10:40 BREAK

10:40 to 11:15

Municipal Pollution Prevention Program

- Eleven areas of municipal operations: program requirements
- Measurable goals: defining and refining
- Source control and preventing exposure
- Spill prevention and response
- Materials management and disposal
- Drainage system maintenance
- Roadway maintenance
- Employee training

11:15 to 11:30

Illicit Discharge Detection and Elimination

- What is an illicit discharge?
- How are illicit discharges identified/detected?
- Outfall inspections and source tracking
- Illegal dumping and local law enforcement

11:30 to 11:55

Post-Construction Stormwater Management

- General requirements
- Who is responsible for operation and maintenance?
- Maintenance of specific types of practices

11:55 to 12:00 QUESTIONS AND WRAP-UP